

Ikea Kitchen Planner

Ikea Kitchen Planner <https://kitchenplanner.ikea.com/US/UI/Pages/VPUI.htm>

Email andrewmarilee@gmail.com

Password: 3248Blazers&

Latest version is ver 8. Ikea has validated ver 6

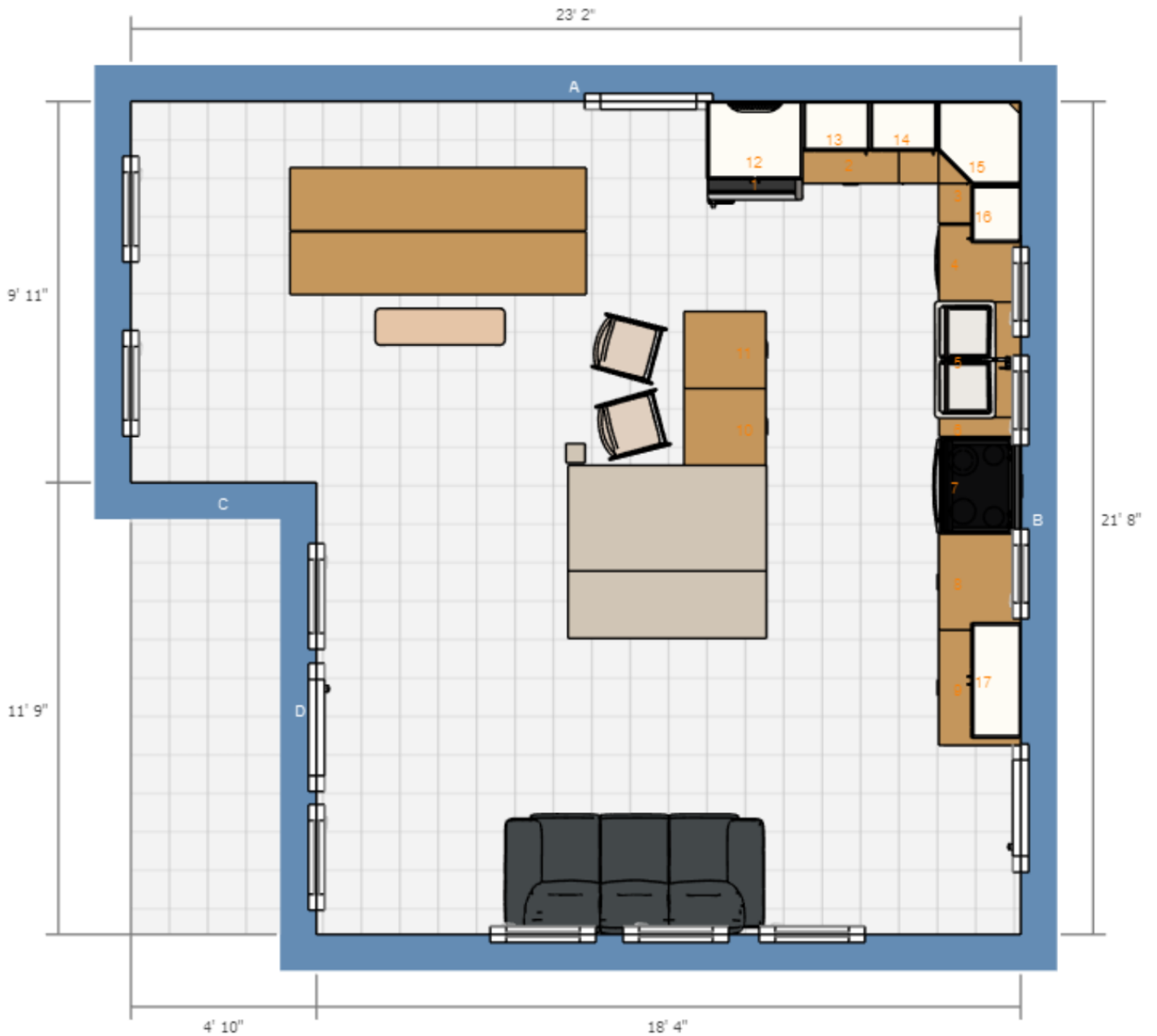
Issues to be resolved in the Ikea Planner:

1. There is currently no provision for the microwave oven pending selection of the type and location. After this has been chosen, some cabinets will need to be modified to accommodate the microwave. See [Microwave Types](#)
2. The island can be constructed with two standard Ikea base cabinets each 24" x 24" placed side by side. An additional custom 12" x 48" storage box can be placed at the rear of these two cabinets making the complete island base 48" x 36". Finally a 49" x 49" countertop can be installed over this base with the 12" overhang at the rear providing a bar sitting area.
3. The sink and faucet needs review. Ikea has a limited selection of sinks and I believe there are better choices from other suppliers. Composite sinks are very durable, don't show scratches and age, are available in various colors, and can be attached to any countertop material.
4. The model currently has shelves and doors on upper cabinets as is normal and only drawers on all lower cabinets. This should be reviewed while thinking about what will be stored here. Also, the arrangement of drawers should be considered. Ikea makes drawers in 4", 6", and 9" heights. Cabinets can be a mix of different drawer heights and a mix of some drawers at the top and doors with shelves below.
5. Lower cabinet sizes are defined by the desired locations of the refrigerator, sink, dishwasher, range. The corner cabinets have a specific width. The remaining space is populated with cabinets that will best fit. Lower cabinets come in 12", 15", 18", 21", 24", 30", and 36" widths. The model shows workable sizes but alternates can easily be used. For example, the tow cabinets between the range and back door are 30" and 36". But alternatively, they could be two 15" and two 18" or other combinations of standard widths. A waste/recycle cabinet should be incorporated.

All appliances and furniture are Ikea products put in position to assist layout and cabinet location:

1. BETRODD bottom freezer, Stainless steel, 13/6 cu.ft	\$1,199	1	\$1,199
2. BETRODD built-in dishwasher, Stainless steel	\$599	1	\$599
3. BERÖMD range with ceramic cooktop, Stainless steel	\$699	1	\$699
4. BERNHARD bar stool with backrest chrome plated/Mjuk white 26 "	\$149	2	\$298
5. EKEDALEN extendable table dark brown 47 1/4/70 7/8x31 1/2 "	\$229	1	\$229
6. INGOLF bar stool with backrest white 24 3/4 "	\$59.99	2	\$119.98
7. MÖCKELBY table oak 92 1/2x39 3/8 "	\$629	1	\$629
8. NORRÅKER bench birch 40 1/2 "	\$69	1	\$69
9. KNISLINGE sofa Samsta dark gray	\$379	1	\$379
10. Total			\$3,221
Cabinets only cost	\$8,991.27 - \$3,221 =		\$5,770

Floor plan from Ikea design ver 8



The island next to the fireplace is shown as two 24" x 24" lower cabinets side by side. An additional 12" x 48" storage area would be located at the rear of these cabinets. Then a 49" x 49" countertop would be placed on top with the 12" overhang where the bar stools are.

3D view



This is the view looking north from the living room. The microwave oven is not represented in this model. Candidate locations would be to the right of the refrigerator at the bottom of the upper cabinets or the top of the lower cabinets. Alternatively, it could be located in the island. Or to the right of the range.