



All measurement in inches

Project name
171110 Scoones Kitchen Layout
Project number
0001-0455-6949



Total Price:
\$5206.35

Username (Email address or IKEA FAMILY number)

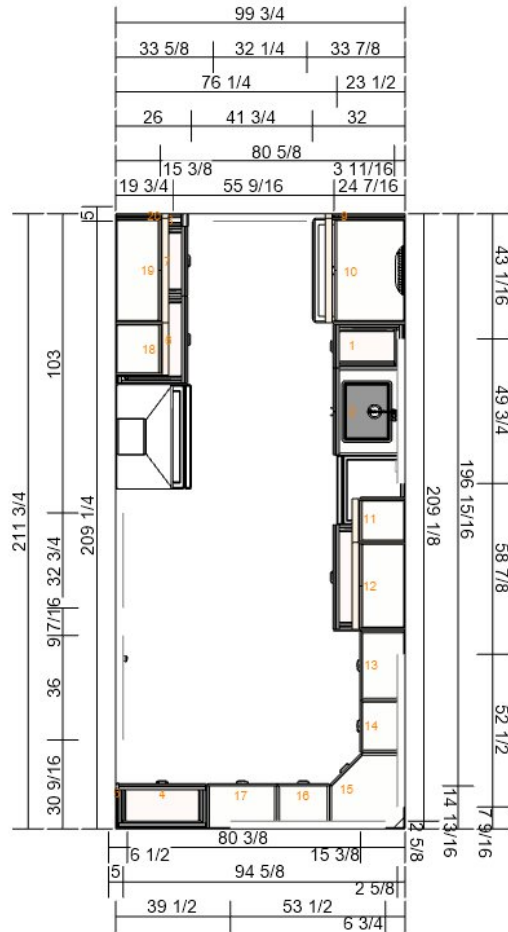
Important

IKEA cannot accept any liability for the accuracy of measurements or furniture layout. Prices in this program are for products you collect from IKEA, take home and assemble yourself. All requested delivery, assembly and installation services are charged separately and not included in the price. Although we do try to ensure that the information in this program is correct, we apologise for any product alterations that may occur.



171110 Scoones Kitchen Layout - Plan View
0001-0455-6949

All measurement in inches



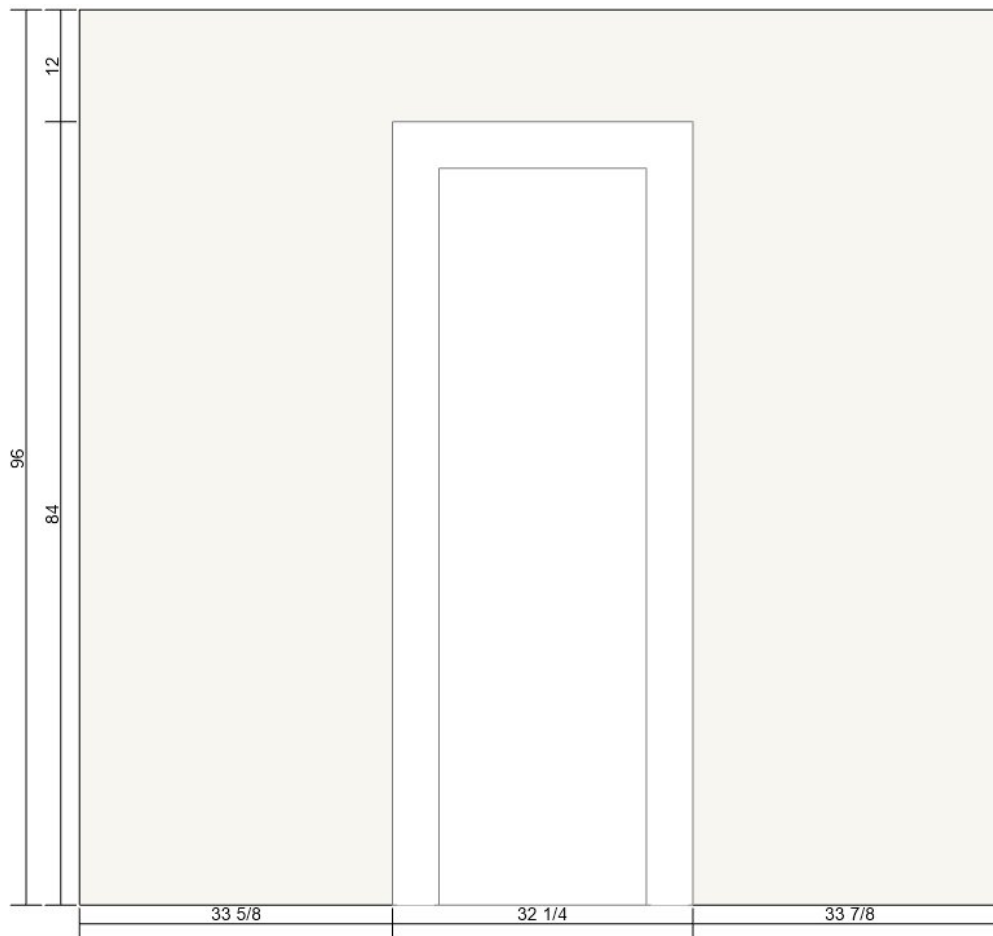
Important

IKEA cannot accept any liability for the accuracy of measurements or furniture layout. Prices in this program are for products you collect from IKEA, take home and assemble yourself. All requested delivery, assembly and installation services are charged separately and not included in the price. Although we do try to ensure that the information in this program is correct, we apologise for any product alterations that may occur.



171110 Scoones Kitchen Layout - North Wall
0001-0455-6949

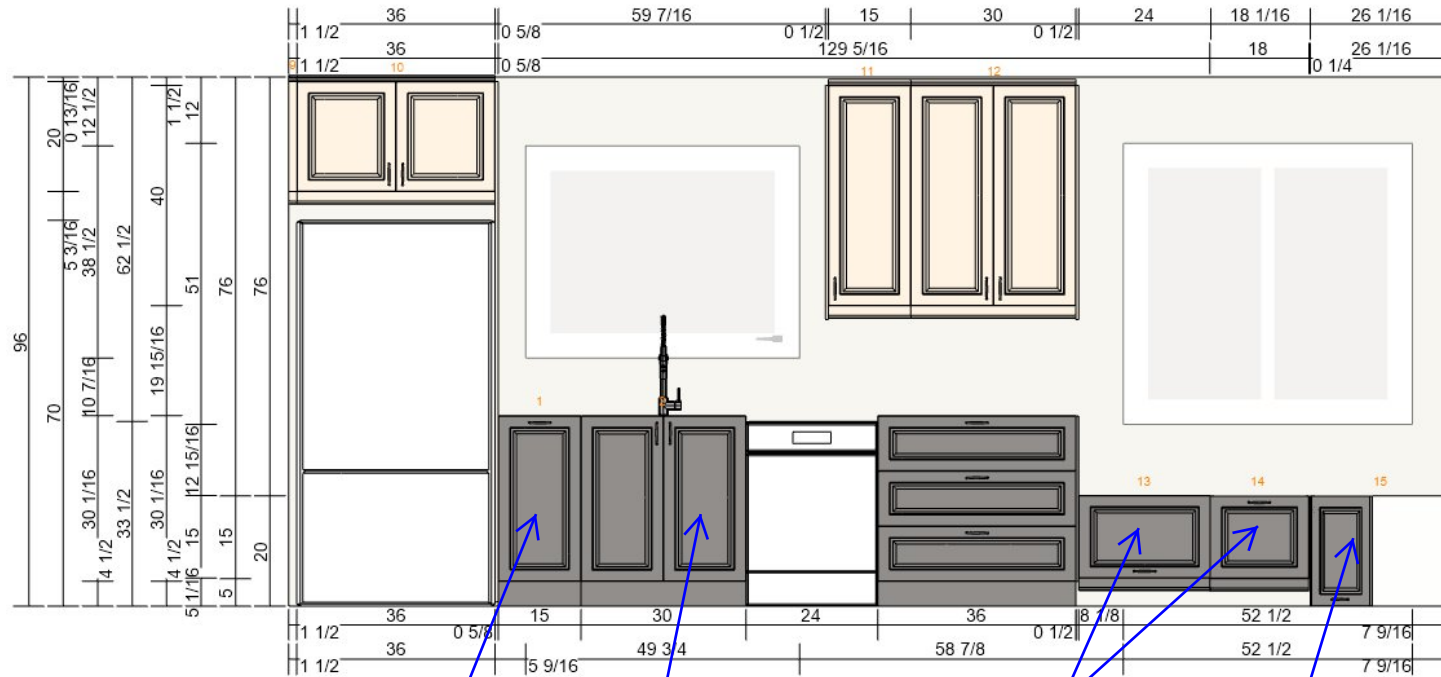
All measurement in inches





171110 Scoones Kitchen Layout - East Wall
0001-0455-6949

All measurement in inches



TRASH PULL-OUT

29-30" UNDERMOUNT SINK

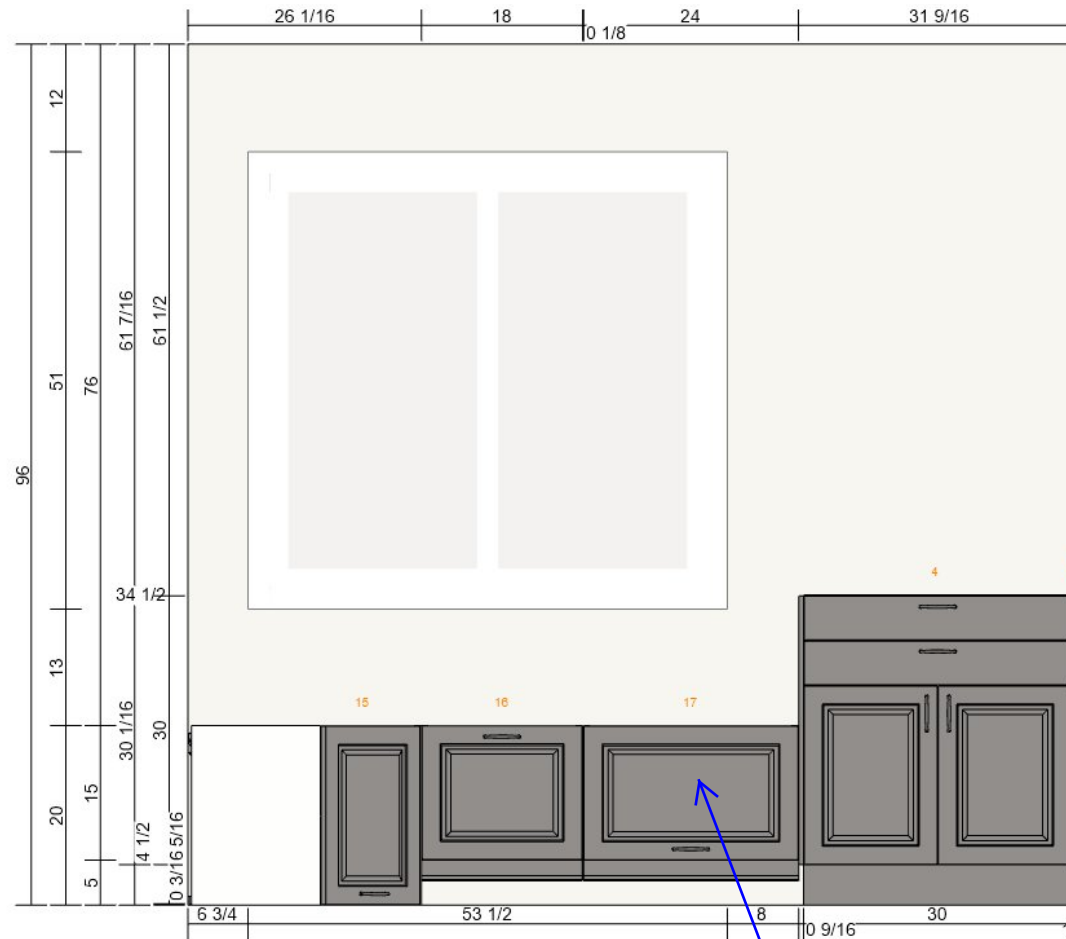
DRAWERS

REDUCE CAB HT. TO 15"; USE
15"h. SIDE-HINGED DOOR



171110 Scoones Kitchen Layout - South Wall
0001-0455-6949

All measurement in inches



DRAWER



171110 Scoones Kitchen Layout - West Wall
0001-0455-6949

All measurement in inches

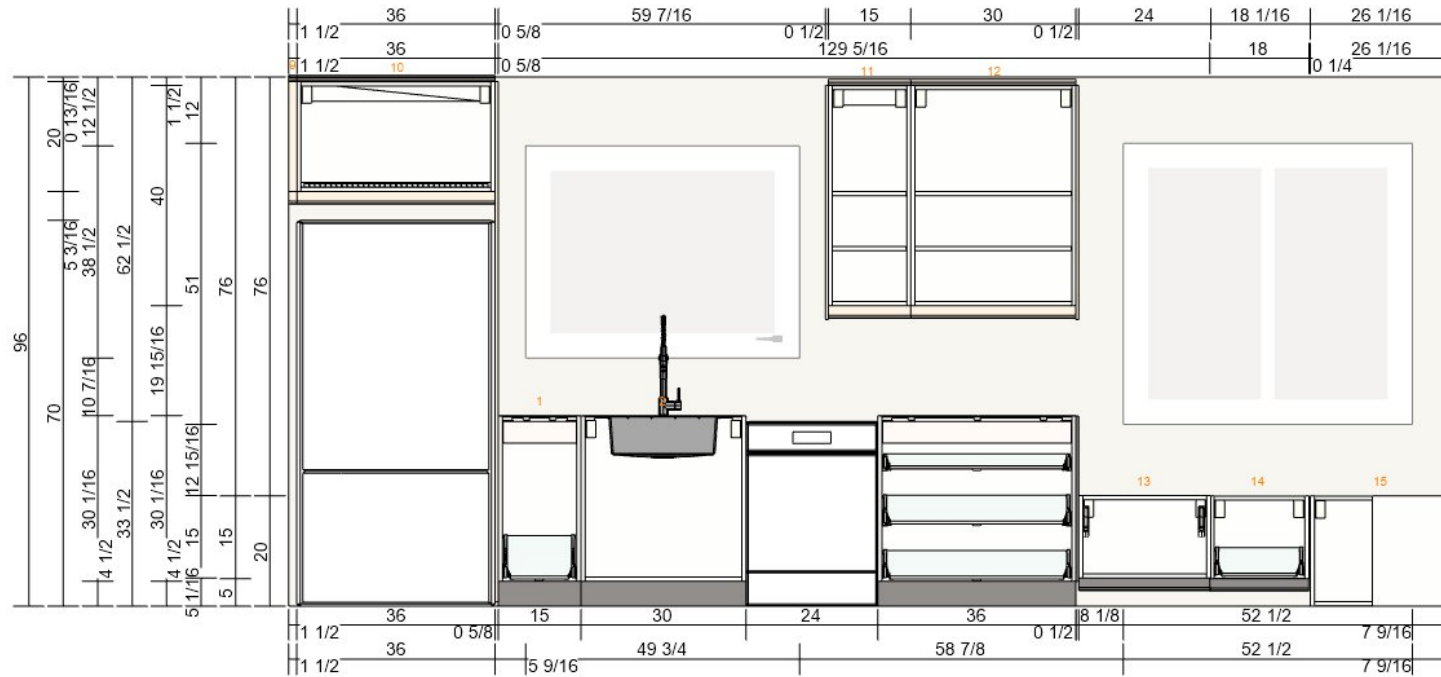


I DOUBLE-CHECKED THE DIMENSIONS HERE;
I THINK USING (2) 30"w. CABS MOVES THE
RANGE TOO FAR OFF FROM THE HOOD (3"+/-).
PLEASE SEE ALT. LAYOUT FOR OPTION W/
NARROWER FILLER.



171110 Scoones Kitchen Layout - East Wall
0001-0455-6949

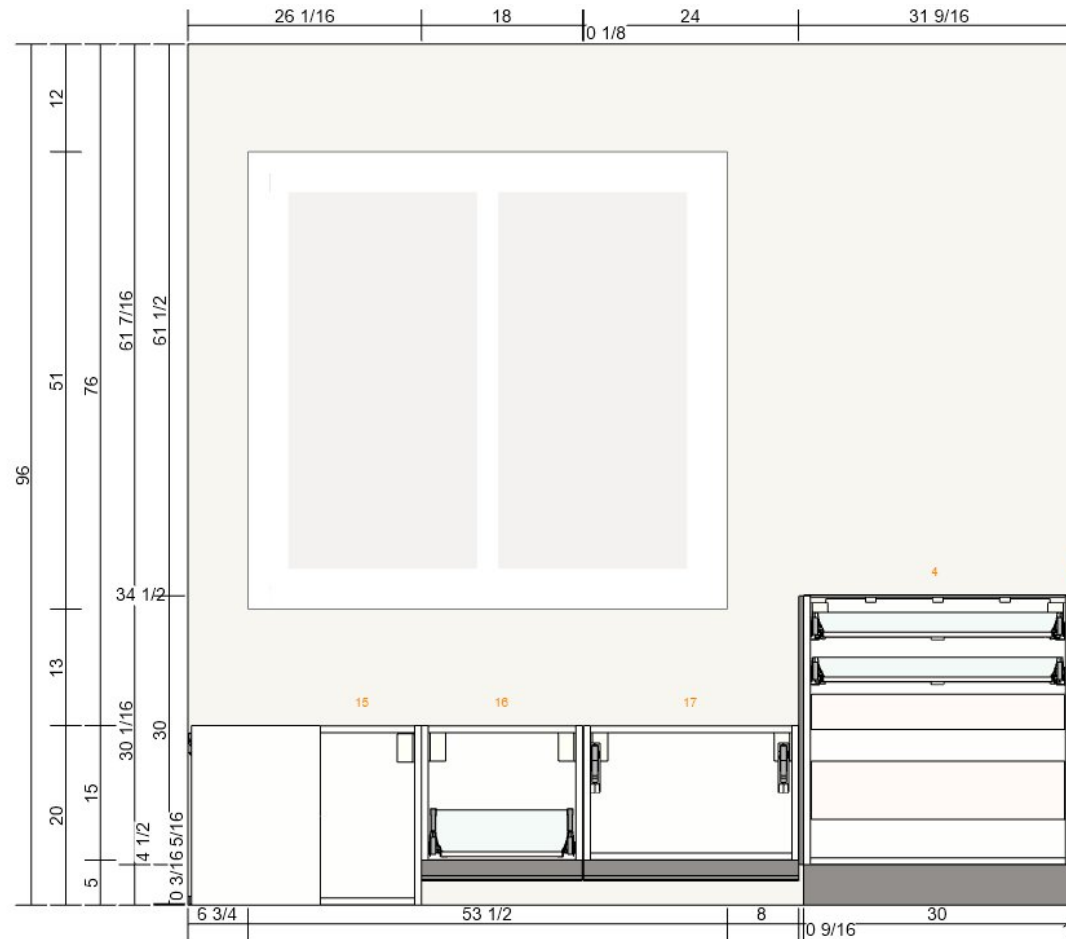
All measurement in inches





171110 Scones Kitchen Layout - South Wall
0001-0455-6949

All measurement in inches





171110 Scoones Kitchen Layout - West Wall
0001-0455-6949

All measurement in inches



Important

IKEA cannot accept any liability for the accuracy of measurements or furniture layout. Prices in this program are for products you collect from IKEA, take home and assemble yourself. All requested delivery, assembly and installation services are charged separately and not included in the price. Although we do try to ensure that the information in this program is correct, we apologise for any product alterations that may occur.



NOTES

THIS LAYOUT WAS PROVIDED BY THE KITCHEN HELPERS. PLEASE PROVIDE THE PDF COPY TO THE IKEA COWORKER PLACING YOUR ORDER. YOU MAY ACCESS YOUR PDF COPY THROUGH OUR SERVICE DESK WITHIN IKEA PORTLAND. FAILURE TO DO SO MAY RESULT IN ERRORS WHEN PLACING YOUR ORDER.

***** PLEASE NOTE*****

If you update your plan in any way when you place your order, and if The Kitchen Helpers will be installing your cabinets, PLEASE PROVIDE A COPY OF YOUR REVISED LAYOUT to our service desk in the IKEA Kitchen Dept. so that your estimate can be updated and changes communicated to our crew. NEGLECTING THIS STEP WILL RESULT IN ERRORS ON YOUR JOBSITE, ADDITIONAL LABOR COST, AND POSSIBLY ADDITIONAL MATERIAL COST.


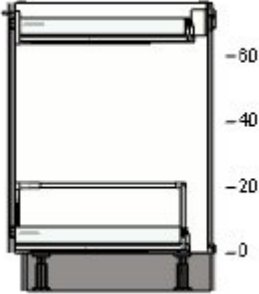






Important

IKEA cannot accept any liability for the accuracy of measurements or furniture layout. Prices in this program are for products you collect from IKEA, take home and assemble yourself. All requested delivery, assembly and installation services are charged separately and not included in the price. Although we do try to ensure that the information in this program is correct, we apologise for any product alterations that may occur.

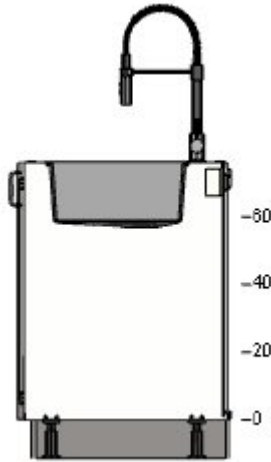


Project name
171110 Scoones Kitchen Layout
Project number
0001-0455-6949

Total Price:
\$5206.35

					Price	Quantity	Total Price
1				00265397 SEKTION base cabinet frame white 15x24x30 "	\$33	1	\$33
				60266073 BODBYN door gray 15x30 "	\$59	1	\$59
				30265678 MAXIMERA drawer, high white 15x24 "	\$36	1	\$36
				50265663 MAXIMERA drawer, low white 15x24 "	\$27	1	\$27
				40265625 UTRUSTA drawer front, low 15 "	\$7	1	\$7
				00280755 UTRUSTA fixture for mounting drawer on door	\$8	1	\$8

2



30265386 SEKTION base cabinet frame
white
30x24x30 "

\$51 1 \$51



50324894 NORRSJÖN single bowl dual mount sink
stainless steel
21 1/8x17 1/4 "

\$199 1 \$199



50325426 LILLVIKEN sink strainer with stopper

\$7 1 \$7



10305289 VIMMERN kitchen faucet with handspray
stainless steel color

\$169 1 \$169



60266073 BODBYN door
gray
15x30 "

\$59 2 \$118



60204645 UTRUSTA hinge
125 °

\$6 2 \$12



20317852 LILLVIKEN lid

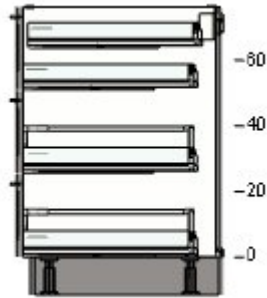
\$4.50 1 \$4.50



80284580 SEKTION reinforced ventilated top rail
galvanized
30 "

\$8 1 \$8

3



80265398 SEKTION base cabinet frame
white
36x24x30 "

\$57 1 \$57



80266048 BODBYN drawer front
gray
36x10 "

\$46 3 \$138



90265661 MAXIMERA drawer, low
white
36x24 "

\$49 2 \$98



60265667 MAXIMERA drawer, medium
white
36x24 "

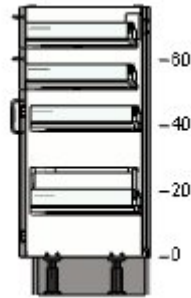
\$56 2 \$112



00265627 UTRUSTA drawer front, low
36 "

\$19 1 \$19

4



50265390 SEKTION base cabinet frame
white
30x14 3/4x30 "

\$44 1 \$44



80266067 BODBYN drawer front
gray
30x5 "

\$33 2 \$66



50266059 BODBYN door
gray
15x20 "

\$48 2 \$96



10265660 MAXIMERA drawer, low
white
30x14 3/4 "

\$37 3 \$111



80265671 MAXIMERA drawer, medium
white
30x14 3/4 "

\$45 1 \$45



20265626 UTRUSTA drawer front, low
30 "

\$15 1 \$15



00265632 UTRUSTA drawer front, medium
30 "

\$19 1 \$19



00204648 UTRUSTA hinge
153 °

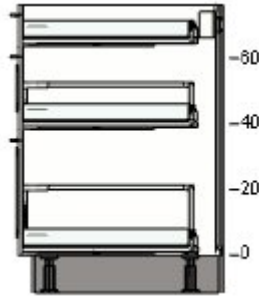
\$15 2 \$30

5



To fill a gap between a wall and a cabinet or between two cabinets you use a filler piece. To get these filler pieces you need to cut a cover panel in the correct size. All cover panels are listed at the bottom of this item list.

6



30265386 SEKTION base cabinet frame
white
30x24x30 "

\$51 1 \$51



80266067 BODBYN drawer front
gray
30x5 "

\$33 1 \$33



60266068 BODBYN drawer front
gray
30x10 "

\$41 1 \$41



40266069 BODBYN drawer front
gray
30x15 "

\$52 1 \$52



70265676 MAXIMERA drawer, high
white
30x24 "

\$54 1 \$54



90265656 MAXIMERA drawer, low
white
30x24 "

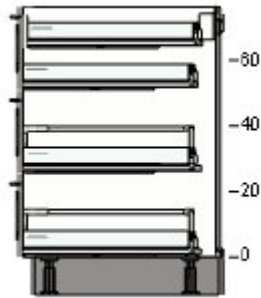
\$43 1 \$43



30265664 MAXIMERA drawer, medium
white
30x24 "

\$50 1 \$50

7



90265388 SEKTION base cabinet frame
white
24x24x30 "

\$46 1 \$46



40266045 BODBYN drawer front
gray
24x10 "

\$39 3 \$117



70265662 MAXIMERA drawer, low
white
24x24 "

\$37 2 \$74



80265666 MAXIMERA drawer, medium
white
24x24 "

\$44 2 \$88



80265628 UTRUSTA drawer front, low
24 "

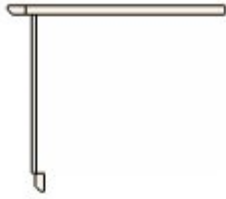
\$11 1 \$11

8



To fill a gap between a wall and a cabinet or between two cabinets you use a filler piece. To get these filler pieces you need to cut a cover panel in the correct size. All cover panels are listed at the bottom of this item list.

9



To fill a gap between a wall and a cabinet or between two cabinets you use a filler piece. To get these filler pieces you need to cut a cover panel in the correct size. All cover panels are listed at the bottom of this item list.

10



20265513 SEKTION wall top cabinet frame
white
36x24x20 "

\$58 1 \$58



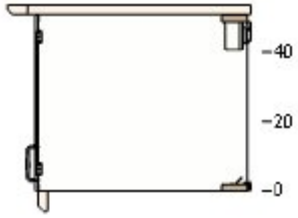
40266328 BODBYN door
off-white
18x20 "

\$58 2 \$116

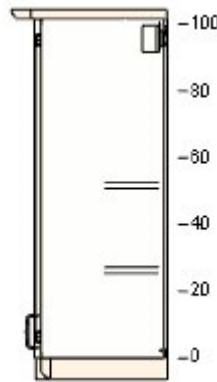


60204645 UTRUSTA hinge
125 °

\$6 2 \$12



11



00265463 SEKTION wall cabinet frame
white
15x14 3/4x40 "

\$33 1 \$33



30266324 BODBYN door
off-white
15x40 "

\$84 1 \$84



80265548 UTRUSTA shelf
white
15x14 3/4 "

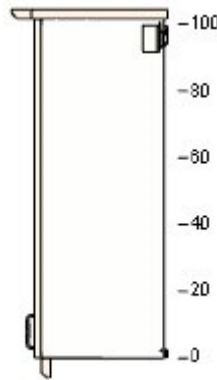
\$5 1 \$5



60204645 UTRUSTA hinge
125 °

\$6 1 \$6

12



90265468 SEKTION wall cabinet frame
white
30x14 3/4x40 "

\$49 1 \$49



30266324 BODBYN door
off-white
15x40 "

\$84 2 \$168



50265535 UTRUSTA shelf
white
30x14 3/4 "

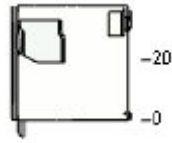
\$10 1 \$10



60204645 UTRUSTA hinge
125 °

\$6 2 \$12

13



30265466 SEKTION wall cabinet frame
white
24x14 3/4x15 "

\$30 1 \$30



20266046 BODBYN drawer front
gray
24x15 "

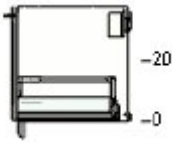
\$50 1 \$50



90265736 UTRUSTA small hinge for horizontal door
white

\$49 1 \$49

14



60265455 SEKTION wall cabinet frame
white
18x14 3/4x15 "

\$26 1 \$26



90266043 BODBYN drawer front
gray
18x15 "

\$43 1 \$43



20265674 MAXIMERA drawer, medium
white
18x14 3/4 "

\$31 1 \$31

15



80265505 SEKTION corner wall cabinet frame
white
26x26x20 "

\$50 1 \$50



50266059 BODBYN door
gray
15x20 "

\$48 1 \$48



20261992 UTRUSTA hinge
45 °

\$11 1 \$11

16



60265455 SEKTION wall cabinet frame
white
18x14 3/4x15 "

\$26 1 \$26



90266043 BODBYN drawer front
gray
18x15 "

\$43 1 \$43



20265674 MAXIMERA drawer, medium
white
18x14 3/4 "

\$31 1 \$31

17



30265466 SEKTION wall cabinet frame
white
24x14 3/4x15 "

\$30 1 \$30



20266046 BODBYN drawer front
gray
24x15 "

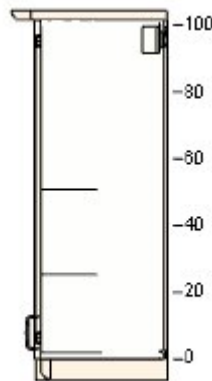
\$50 1 \$50



90265736 UTRUSTA small hinge for horizontal door
white

\$49 1 \$49

18



00265458 SEKTION wall cabinet frame
white
18x14 3/4x40 "

\$36 1 \$36



00266330 BODBYN door
off-white
18x40 "

\$97 1 \$97



80265529 UTRUSTA shelf
white
18x14 3/4 "

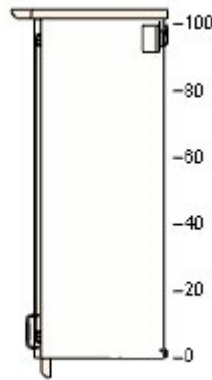
\$6 1 \$6



60204645 UTRUSTA hinge
125 °

\$6 1 \$6

19



60265460 SEKTION wall cabinet frame
white
36x14 3/4x40 "

\$57 1 \$57



00266330 BODBYN door
off-white
18x40 "

\$97 2 \$194



40265526 UTRUSTA shelf
white
36x14 3/4 "

\$14 1 \$14



60204645 UTRUSTA hinge
125 °

\$6 2 \$12

20



To fill a gap between a wall and a cabinet or between two cabinets you use a filler piece. To get these filler pieces you need to cut a cover panel in the correct size. All cover panels are listed at the bottom of this item list.

SUSPENSION RAILS



60261527 SEKTION suspension rail
galvanized
84 "

\$13 6 \$78


LEGS AND TOE KICKS


	00266052	BODBYN toekick gray 84x4 1/2 "	\$19	4	\$76
	10265518	SEKTION leg 4 1/2 "	\$6	4	\$24

COVER PANELS & FILLER PIECES

	40266026	BODBYN cover panel gray 15x32 1/2 "	\$27	1	\$27
	80266053	BODBYN cover panel gray 25x30 "	\$38	3	\$114
	90266415	FÖRBÄTTRA cover panel off-white 36x96 "	\$159	1	\$159
	60266407	FÖRBÄTTRA cover panel off-white 15x32 1/2 "	\$27	1	\$27
	40266408	FÖRBÄTTRA cover panel off-white 15x42 1/2 "	\$37	4	\$148


DECO STRIP & CORNICE


	60221065	BODBYN gray contoured deco strip 87 "	\$49	1	\$49
---	----------	--	------	---	------

	90206959	FÖRBÄTTRA off-white contoured deco strip 87x2 3/8 "	\$49	5	\$245
---	----------	--	------	---	-------

KNOBS, HANDLES & DOOR DAMPERS

	70265247	MÖLLARP handle black 4 3/16 "	\$8.99	15	\$134.85
---	----------	-------------------------------------	--------	----	----------

	60241822	UTRUSTA door damper for hinge 153 °	\$7	1	\$7
---	----------	--	-----	---	-----

	40241823	UTRUSTA door damper for hinge 110-125 °	\$6	5	\$30
---	----------	--	-----	---	------

DINING

	40063632	DOCKSTA table white 41 "	\$179	1	\$179
---	----------	--------------------------------	-------	---	-------

	40228812	IDOLF chair white	\$59	2	\$118
--	----------	----------------------	------	---	-------

Important

IKEA cannot accept any liability for the accuracy of measurements or furniture layout. Prices in this program are for products you purchase from IKEA, take home and assemble yourself. All requested delivery, assembly and installation services are charged separately and not included in the price. Although we do try to ensure that the information in this program is correct, we apologize for any product alterations that may occur. In compliance with California Title 20 regulations, lighting prices and features may vary in the state of California. See IKEA store for details. All prices are valid until July 31, 2018

Total Price:
\$5206.35