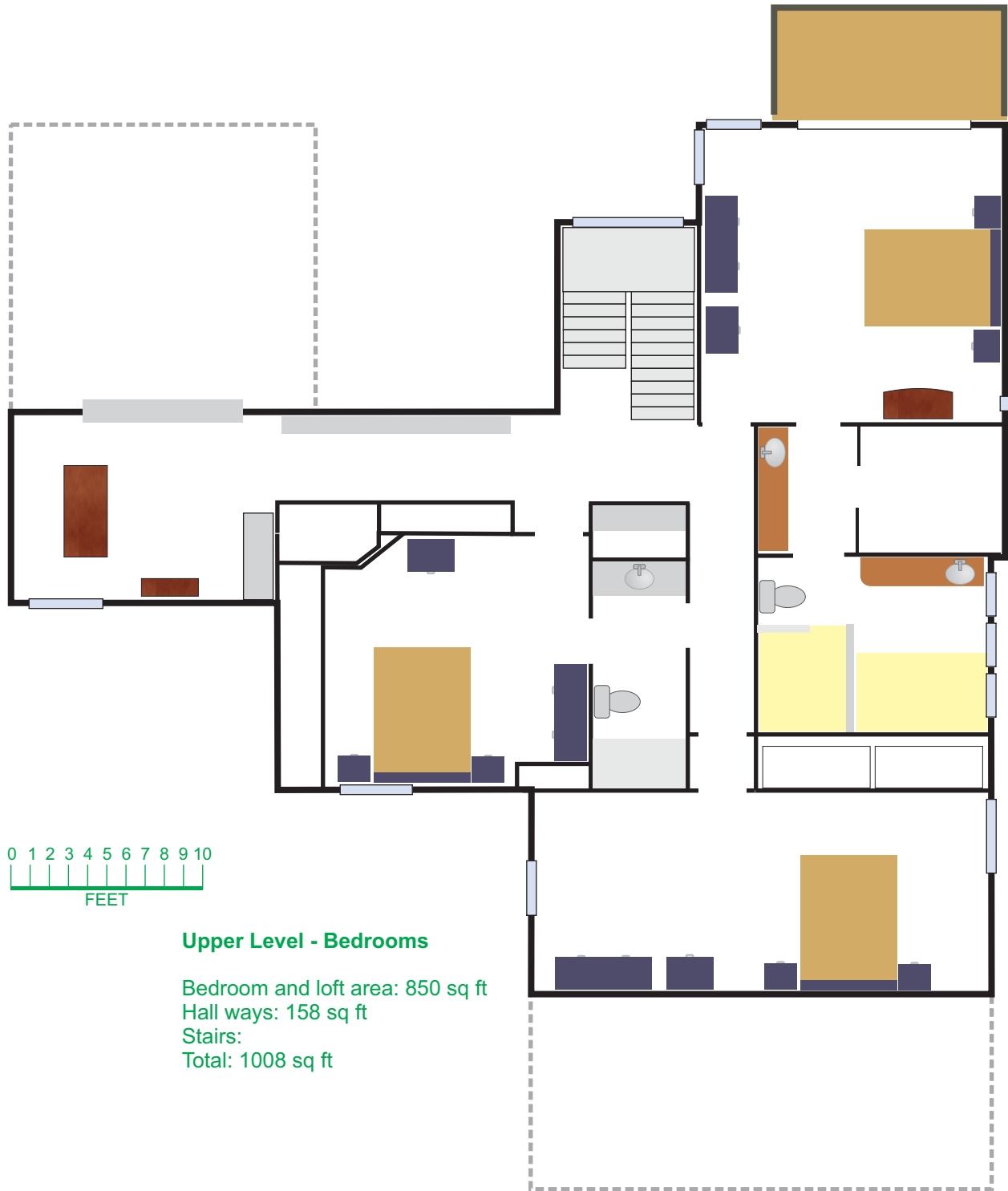


Main Level

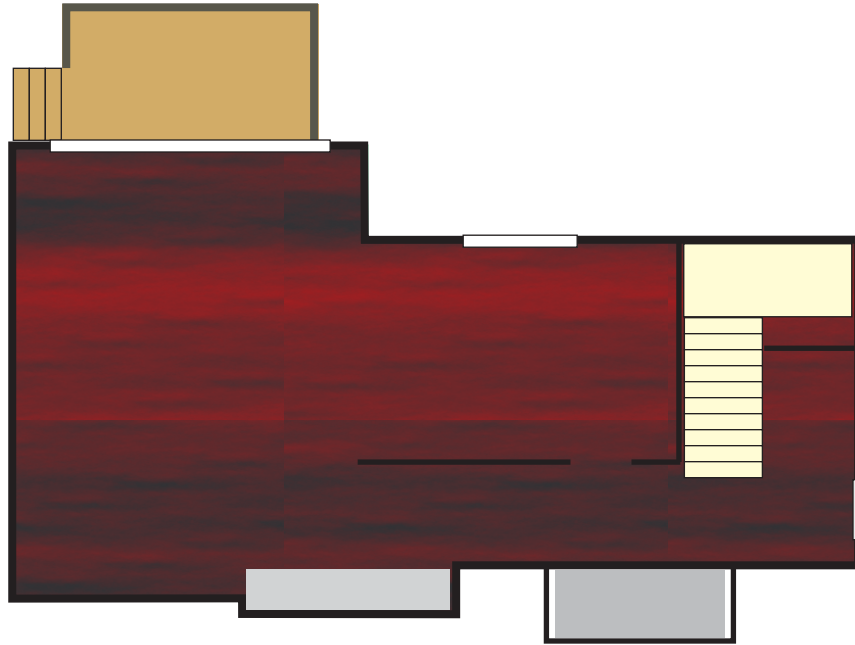
- Living Room: 300 sq ft
- Dining Room: 120 sq ft
- Family Room: 239 sq ft
- Den: 150 sq ft
- Kitchen: 144 sq ft
- Hallways: 219 sq ft
- Breakfast nook: 136 sq ft

- Total carpet: 539 sq ft
- Total hard wood: 614 sq ft



Upper Level - Bedrooms

Bedroom and loft area: 850 sq ft
Hall ways: 158 sq ft
Stairs:
Total: 1008 sq ft



Lower Level

Rooms floor area: 380 sq ft
Hallways: 107 sq ft
Stairs:
Total: 487 sq ft

